

TENOR SAX.

COMMUNIN' WITH THE CROWS V.2

ERIK JERABSON

8 4xs 3

A

13

19

25

32

B

42

46

52

56

60

mp

ppp

3

3

3

66

75

80

88

92

96

99

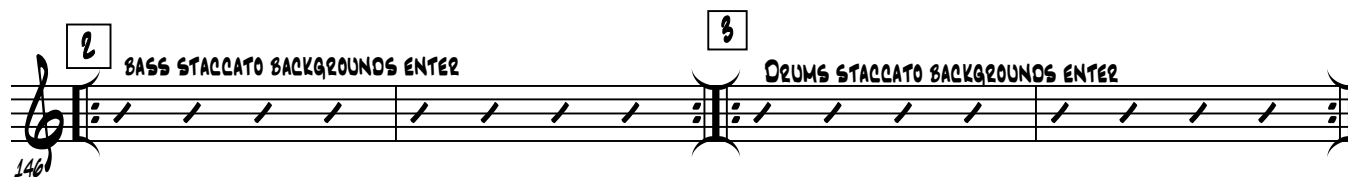
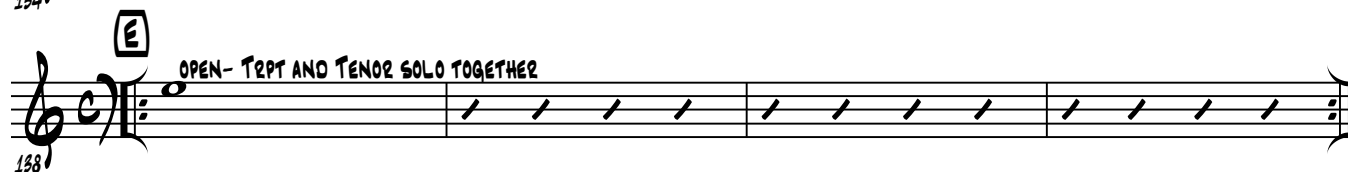
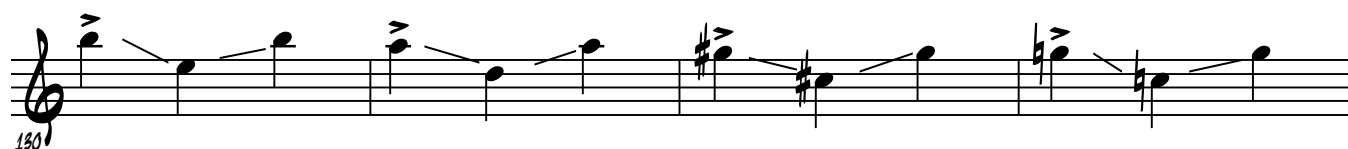
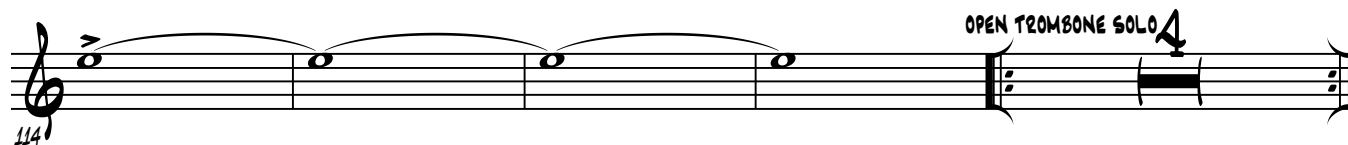
103

106

108

110

RUBATO



The image displays a musical score for the song "The Rose Tree". It consists of two systems of music, each with a vocal line and a piano accompaniment line.

System 1 (Measures 162-170):

- Vocal Line:** The melody is in 3/4 time. It begins with a whole note G4 (measure 162), followed by a half note A4 (measure 163), and then a series of quarter notes: B4 (164), A4 (165), G4 (166), F#4 (167), E4 (168), D4 (169), and C4 (170).
- Piano Accompaniment:** The left hand plays a steady eighth-note pattern (G4, A4, B4, A4, G4) in the right hand. The left hand plays a steady eighth-note pattern (G3, A3, B3, A3, G3). The right hand plays a steady eighth-note pattern (G4, A4, B4, A4, G4). The left hand plays a steady eighth-note pattern (G3, A3, B3, A3, G3).

System 2 (Measures 171-178):

- Vocal Line:** The melody continues with a whole note G4 (measure 171), followed by a half note A4 (measure 172), and then a series of quarter notes: B4 (173), A4 (174), G4 (175), F#4 (176), E4 (177), D4 (178), and C4 (179).
- Piano Accompaniment:** The left hand plays a steady eighth-note pattern (G4, A4, B4, A4, G4) in the right hand. The left hand plays a steady eighth-note pattern (G3, A3, B3, A3, G3). The right hand plays a steady eighth-note pattern (G4, A4, B4, A4, G4). The left hand plays a steady eighth-note pattern (G3, A3, B3, A3, G3).